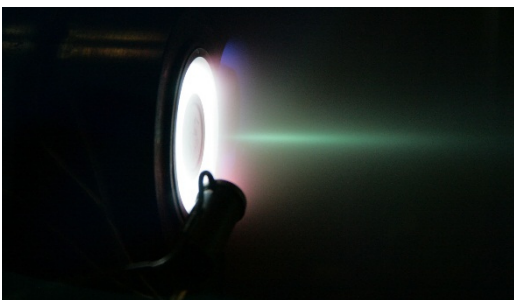
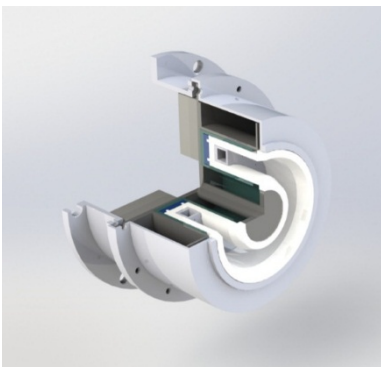
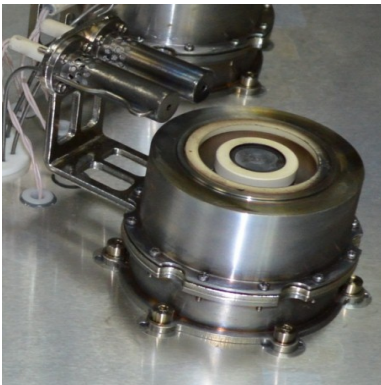


SHT100 SERAN HALL Effect Thruster



100W HALL Thruster

The low power thruster is ideal for small spacecraft. Sufficiently high specific characteristics for this class of thrusters allow efficient use of onboard resources. This engine will be the optimal choice for spacecraft from 6U.



Characteristic	Value
Nominal Power	100W
Nominal Thrust	5mN
Nominal Voltage	200V
Specific Impulse	1000s
Total Impulse capability	40kN*s
Efficiency	32%